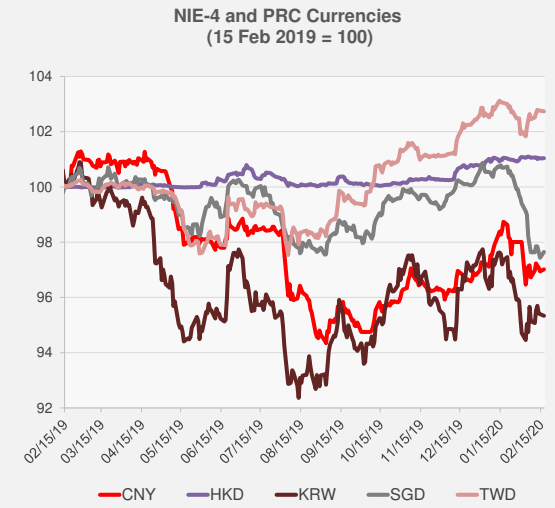
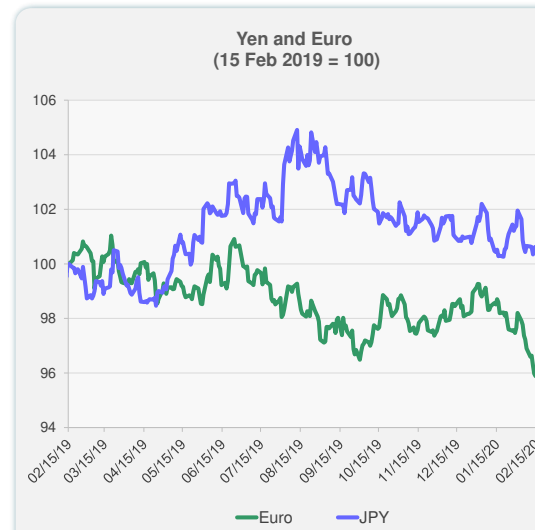
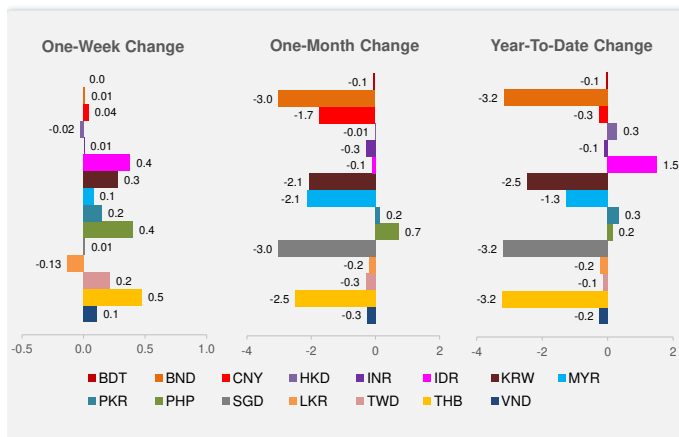
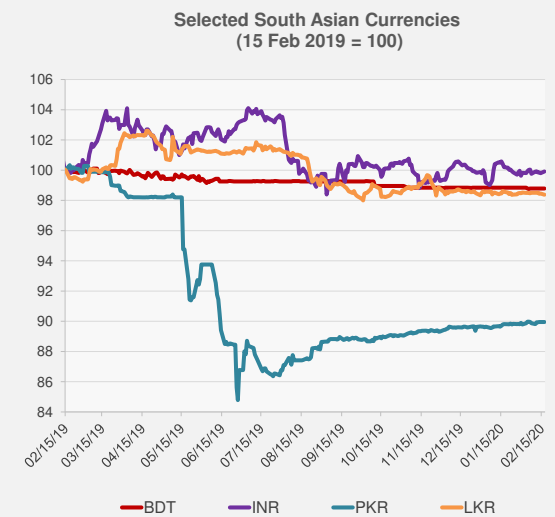
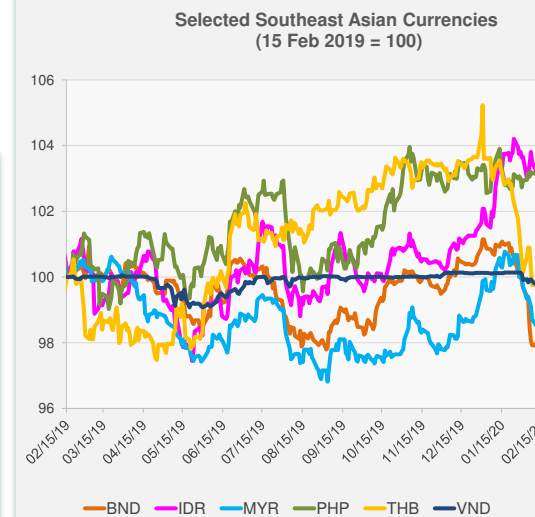


	Latest Closing	% change from Previous Day	% change from 01-Jan-20
Euro	0.92	0.05	-3.35
Japanese yen (JPY)	109.88	-0.09	-1.02
Bangladeshi taka (BDT)	84.93	0.00	-0.06
Brunei dollar (BND)	1.39	0.22	-3.17
Chinese yuan (CNY)	6.98	0.08	-0.26
Hong Kong dollar (HKD)	7.77	0.01	0.29
Indian rupee (INR)	71.29	0.11	-0.09
Indonesian rupiah (IDR)	13,660.00	0.24	1.51
Korean won (KRW)	1,183.90	-0.06	-2.46
Malaysian ringgit (MYR)	4.14	-0.13	-1.27
Pakistan rupee (PKR)	154.37	0.00	0.34
Philippine peso (PHP)	50.58	-0.21	0.15
Singapore dollar (SGD)	1.39	0.22	-3.20
Sri Lanka rupee (LKR)	181.60	-0.08	-0.24
Taipei,China NT dollar (TWD)	30.03	-0.03	-0.12
Thai baht (THB)	31.18	0.12	-3.22
Vietnamese dong (VND)	23,230.00	0.06	-0.25



NIE = Newly Industrialized Economies

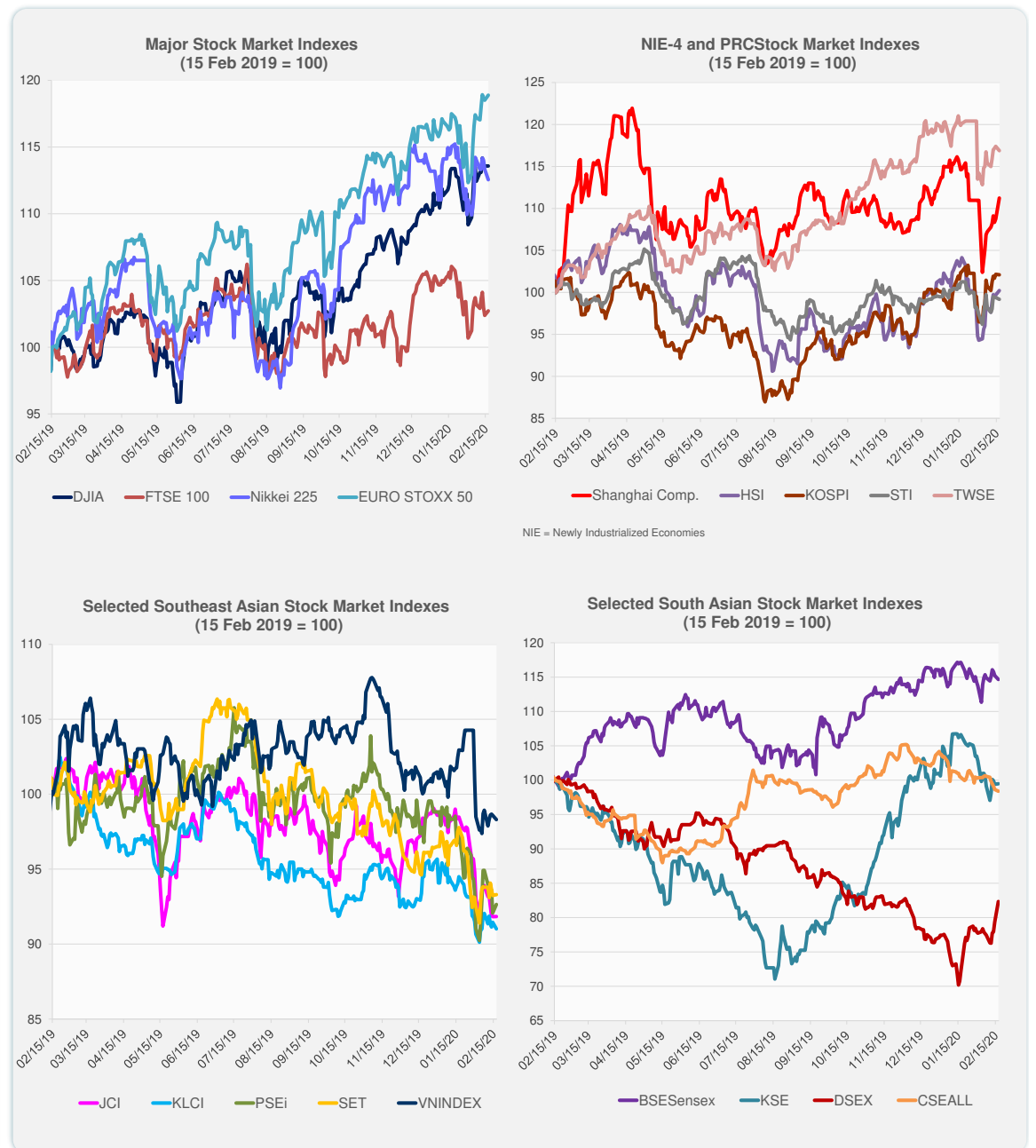
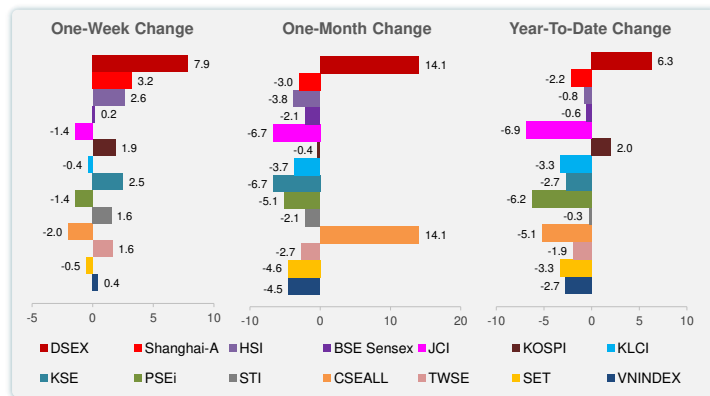


Note: Negative/Decreasing values indicate depreciation of local currency, and positive/increasing values indicate appreciation.
Source: Bloomberg.

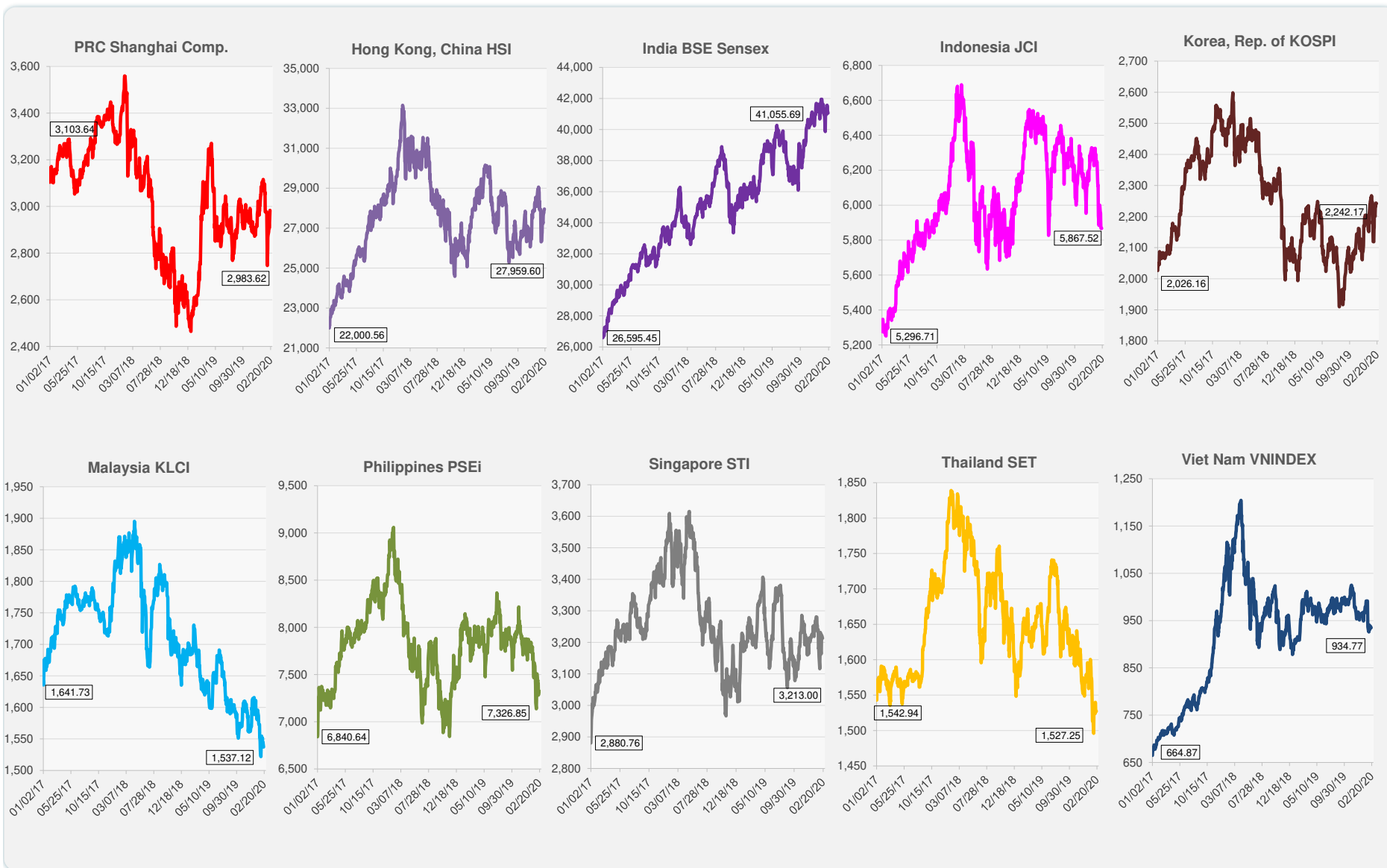


Source: Bloomberg.

	Latest Closing	% change from Previous Day	% change from 01-Jan-20
US Dow Jones Ind Avg	29,398.08	0.00	3.01
US NASDAQ	9,731.18	0.00	8.45
US S&P 500	3,380.16	0.00	4.62
UK FTSE 100	7,433.25	0.33	-1.45
EURO STOXX 50	3,853.27	0.32	2.89
Japan NIKKEI 225	23,523.24	-0.69	-0.56
Bangladesh DSEX	4,734.15	3.71	6.32
PRC Shanghai Comp.	2,983.62	2.28	-2.18
Hong Kong, China HSI	27,959.60	0.52	-0.82
India BSE Sensex	41,055.69	-0.49	-0.61
Indonesia JCI	5,867.52	0.01	-6.86
Korea, Rep. of KOSPI	2,242.17	-0.06	2.02
Malaysia KLCI	1,537.12	-0.48	-3.25
Pakistan KSE 100	40,276.93	0.08	-2.71
Philippines PSEi	7,326.85	0.62	-6.25
Singapore STI	3,213.00	-0.22	-0.31
Sri Lanka CSEALL	5,814.27	-0.26	-5.14
Taipei, China TWSE	11,763.51	-0.44	-1.95
Thailand SET	1,527.25	0.06	-3.33
Viet Nam VNINDEX	934.77	-0.29	-2.73



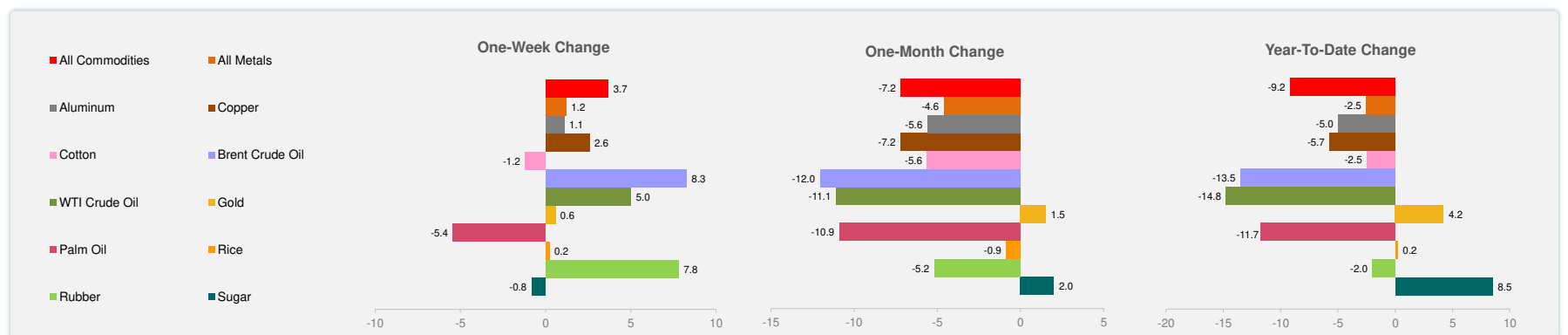
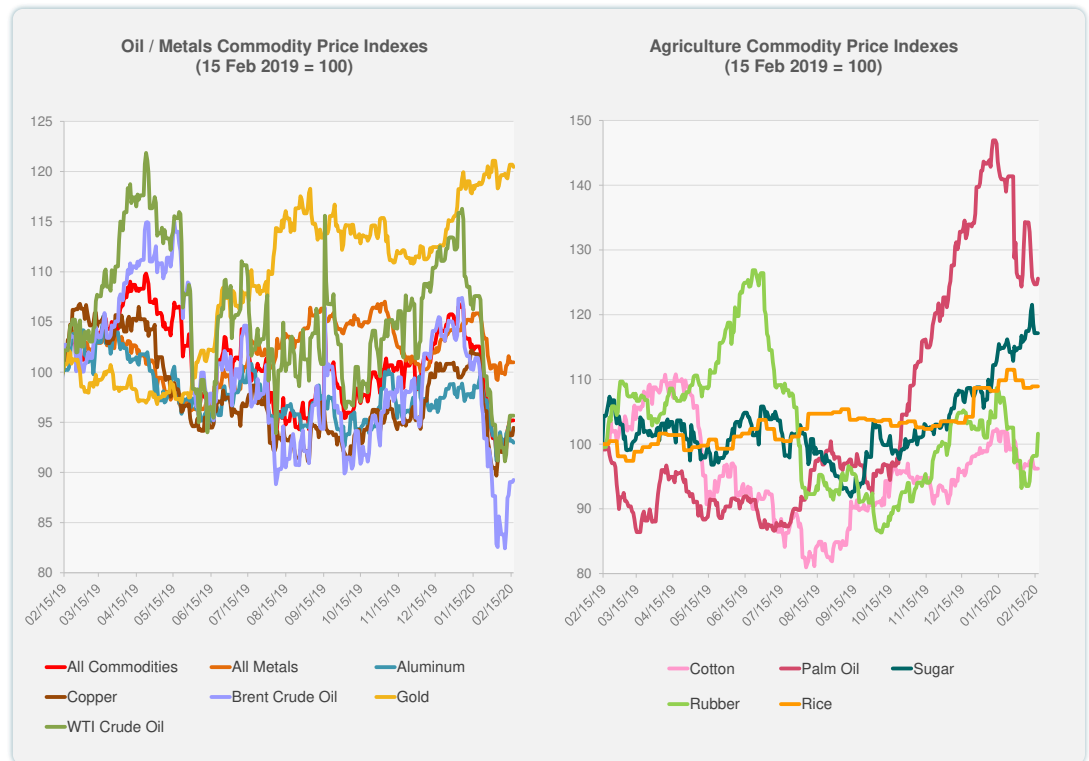
Source: Bloomberg.



Source: Bloomberg.

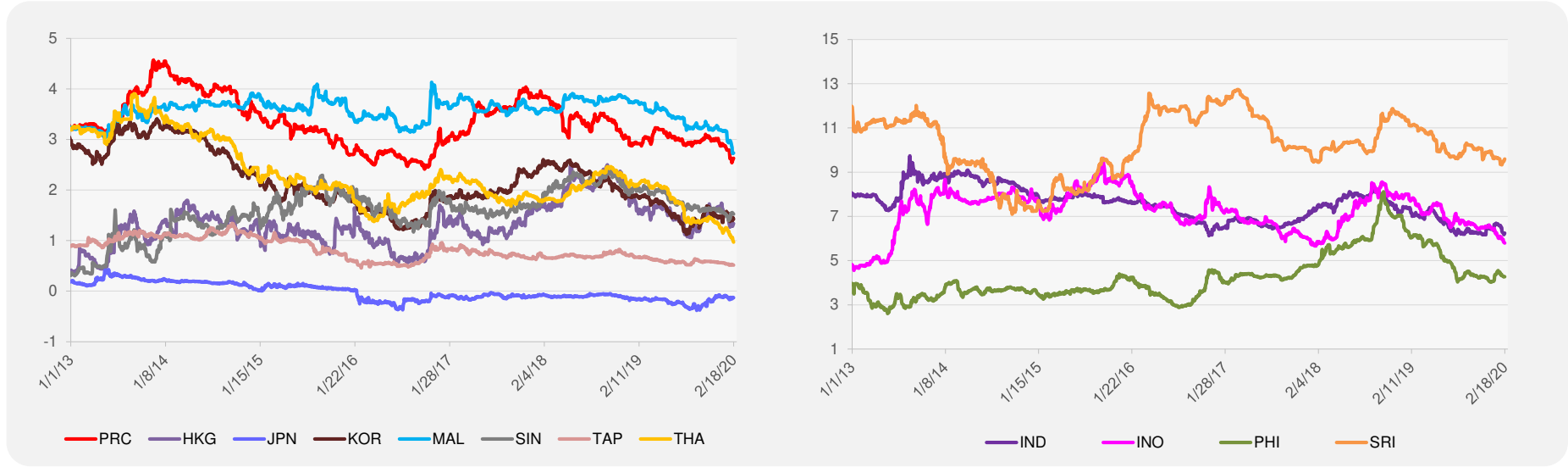
	Unit	Latest Closing	% change from Previous Day	% change from 01-Jan-20
S&P All Commodities	US\$	396.23	0.00	-9.17
S&P All Metals	US\$	212.04	0.00	-2.53
Aluminum	US\$/metric ton	1,692.50	-0.22	-4.98
Copper	US\$/metric ton	5,796.75	0.80	-5.73
Cotton	US cents/lb	64.66	0.00	-2.47
Brent Crude Oil	US\$/barrel	57.35	0.23	-13.51
WTI Crude Oil	US\$/barrel	52.05	0.00	-14.76
Gold	US\$/troy oz	1,581.13	-0.18	4.21
Palm Oil	US\$/metric tonne	652.95	0.70	-11.71
Rice ¹	US\$/metric ton	464.00	0.00	0.22
Rubber ²	US\$/kg	163.00	3.49	-1.98
Sugar	US cents/lb	14.69	0.00	8.49

¹ Latest closing price from 12 February 2020.
² Singapore Exchange, Ribbed Smoked Sheet Rubber.

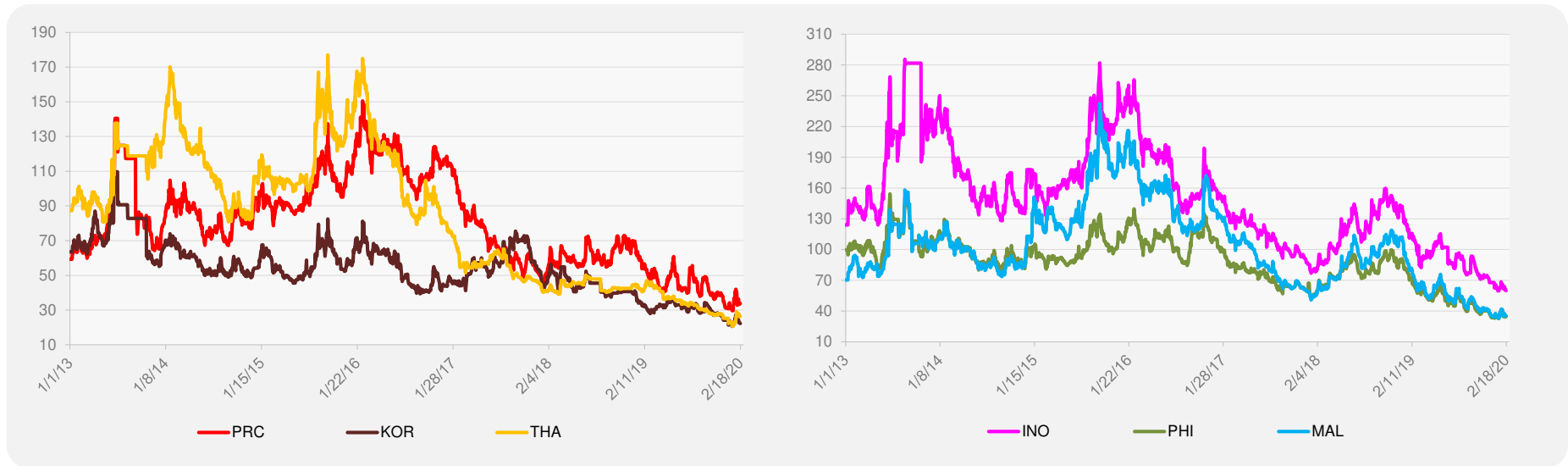


Source: Bloomberg.

5-YEAR LOCAL CURRENCY GOVERNMENT BOND YIELDS (%)



5-YEAR CREDIT DEFAULT SWAP¹



¹ In USD and based on sovereign bonds.
Source: Bloomberg.